

6.5.6 Accessories available (systematic compatibility) HID-ACS

<p>HID-ACS00</p> 	<p>HID-ACS0i</p> 	<p>HID-ACS01</p> 	<p>HID-ACS00 Bottles support in Polymeric Material (Max Capacity: 1000 ml bottles)</p> <p>HID-ACS0i Bottles support in Stainless Steel Aisi 304 (Max Capacity: 1000 ml bottles)</p> <p>HID-ACS01 Identifier</p>
<p>HID-ACS02</p> 	<p>HID-ACS03</p> 	<p>HID-ACS04</p> 	<p>HID-ACS02 Medication, preparation tray, (Max Capacity: 300 x 150 mm, 2 Kg)</p> <p>HID-ACS03 Accessories holder coupled bar (Max Capacity: 25 x 10 x 300 mm, 5 Kg)</p> <p>HID-ACS04 Oxygen cylinder holder</p>
<p>HID-ACS05</p> 	<p>HID-ACS06</p> 	<p>HID-ACS07</p> 	<p>HID-ACS05 Electrified sockets (N°4 Sockets with bi-polar switch) CE 93/42 Conformity</p> <p>HID-ACS06 Support with N°6 Hooks (Max Capacity: 20 Kg distributed) (HSI Max =2300 mm)</p> <p>HID-ACS07 Drainage bags support</p>
<p>HID-ACS08</p> 	<p>HID-ACS09</p> 	<p>HID-ACS10</p> 	<p>HID-ACS08 Cantilevered Rod and Infusion Support</p> <p>HID-ACS09 Infusion pumps support type 1 (N°2 supports Ø 25 L=700, 20 Kg)</p> <p>HID-ACS10 Infusion pumps support type 2 (N°2 supports Ø 25 L=300, 10 Kg)</p>

6.5.6 Accessories available (systemic compatibility) HID-ACS

HID-ACS11

Handlebar for walking:
Ergonomic, Adjustable,
Autoclavable

HID-ACS12

Infusion pumps support type 3
(only for HI-DROP Load) (n°2
supports Ø 25 L=700, 20 Kg)

HID-ACS13

Solution containers holding tray
(only for HI-DROP Load)
(Max Capacity: 20 Kg)

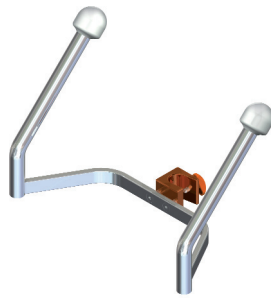
HID-ACSSQ

Manual bag squeezer
(Squeezer) (Max Pressure:
300 mmHg)

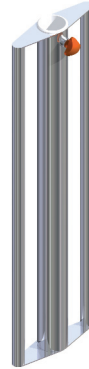
HID-ACSKD

Amenity for
Paediatric-Geriatric device
(wheels, graphics, etc.
on request)

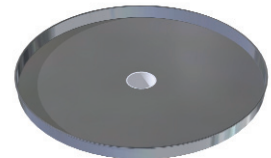
HID-ACS11



HID-ACS12



HID-ACS13



HID-ACSSQ



HID-ACSKD



The device to which all
accessories available can
be applied is attributed

Qlf = 100

(Maximum).

Differently, it is attributed a
proportionate Qlf.

HI-DROP S2 +HID-ACS09



HI-DROP S1 +HID-ACS10



HI-DROP LOAD +HID-ACS12

